

*Quality  
Testing  
Equipment*



*Quality  
Testing  
Equipment*

**VTEQ 5000 COMMERCIAL ROLLER BRAKE TESTER - 13T specification**



**3 years**  
warranty



Quality  
Testing  
Equipment



Quality  
Testing  
Equipment

**Standard Features:**

DVSA approved



Driver & Vehicle  
Standards  
Agency

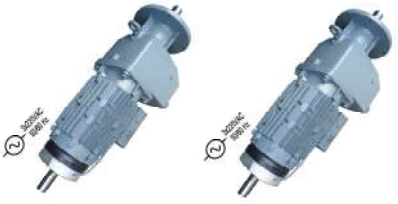
**PENDING**

GEA approved



GEA  
GARAGE EQUIPMENT ASSOCIATION

2 x 9KW  
Gearboxes/Motors

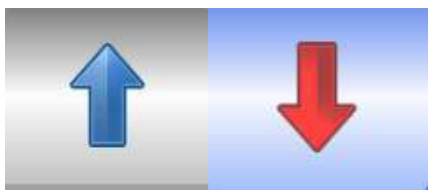


Guaranteed to get out rollers  
first time every time, safely

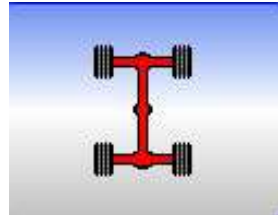


Roller  
Lock

Bi – directional



4x4 Programme



Automatic Weighing System



13T Axle Weight



Quality  
Testing  
Equipment



Quality  
Testing  
Equipment

Soft Start Operation



Emergency stop button



Robust Cabinet



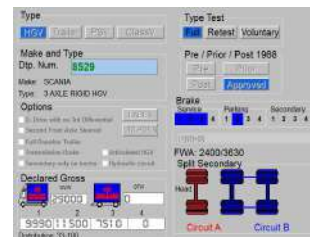
Full PC package as standard



One-man operation/Tablet



Full DVSA latest Database



Remote access software



customer requires suitable internet

Wireless router

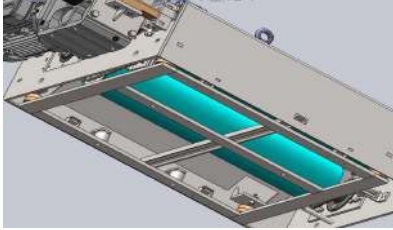


Quality  
Testing  
Equipment



Quality  
Testing  
Equipment

Installation Frame



Centre Cover Plate



Delivery



Installation to a prepared site



Installation Skirted Frame



**OPTIONAL**

Installation Full Cassette



**OPTIONAL**

Slim Line Consul



**OPTIONAL**

Separate Control Box



**OPTIONAL**



Quality  
Testing  
Equipment



Quality  
Testing  
Equipment

Compliment with wireless  
Axle Play Detector



Upgrade to Tachograph

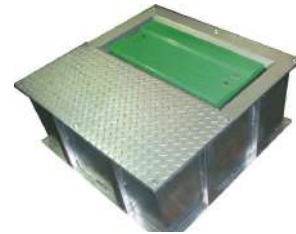


PENDING

Upgrade to Side Slip Tester



Upgrade to Suspension Tester



Upgrade to Load Simulation



Upgradable to Pneumatic or  
Hydraulic Brake Pressure  
Sensor Wifi or wired



Driver & Vehicle  
Standards  
Agency

